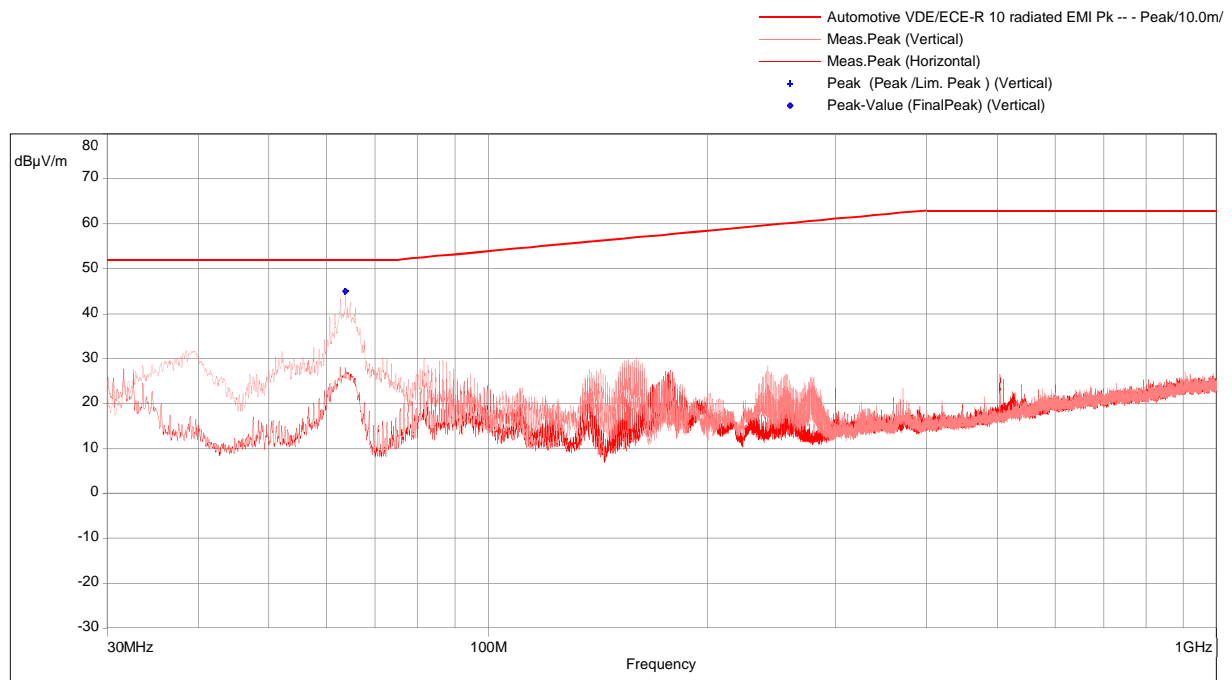


VDE Testing and Certification Institut

3.1.1.1 Radiated electromagnetic broadband emissions (30 MHz – 1 GHz), right side of EUT

Prescan settings:

Subrange	Line	Frequency step	IF Bandwidth	Measurement time	RF Attenuation	Preamplifier	Presel. Multisampling
30MHz - 1GHz	Vertical	30kHz	120kHz	10 ms/Pts	10 dB	OFF	ON
30MHz - 1GHz	Horizontal	30kHz	120kHz	10 ms/Pts	10 dB	OFF	ON



VDE Testing and Certification Institut

Results:

FinalPeak (1)

Frequency (MHz)	SR	Peak-Value (dBµV/m)	Peak-Limit (dBµV/m)	Margin (dB)	Polarisation	Comments	Correction (dB)
63.66	1	45.01	52.00	6.99	Vertical	Pass	-16.31

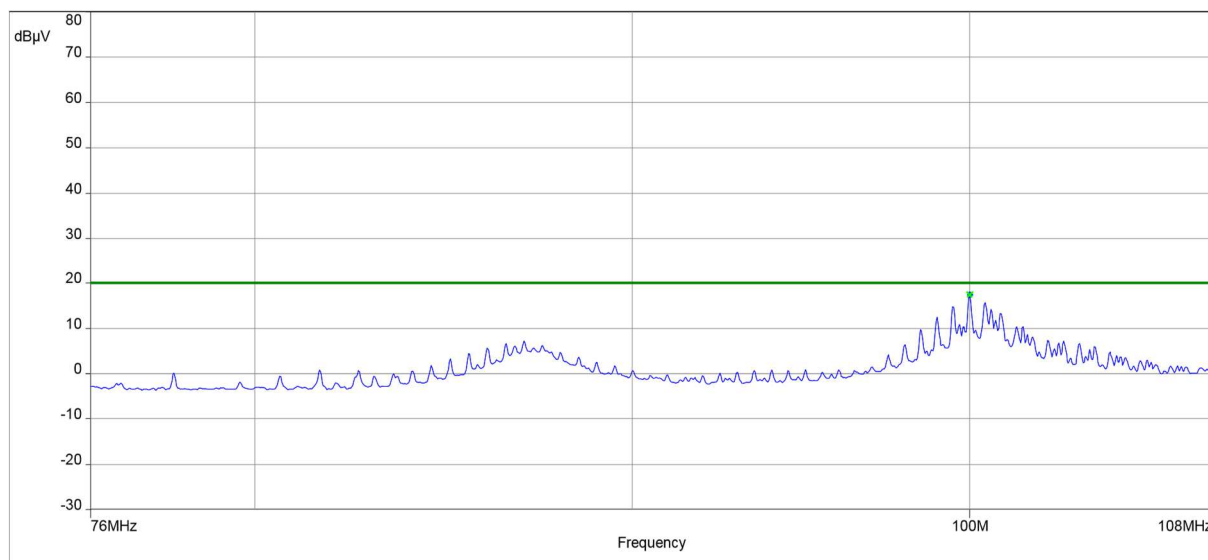
3.1.2 Radiated electromagnetic narrowband emissions (76 MHz – 108 MHz)

Prescan settings:

Subrange	Line	Frequency step	IF Bandwith	Measurement time	RF Attenuation	Preamplifier	Presel. Multisampling
76MHz - 108MHz	Wire + Measure	30kHz	120kHz	50 ms/Pts	Auto	OFF	OFF

Line: Wire + Measure

Automotive VDE/ECE-R10 Car Antenna --- Average/
Meas.Avg (Wire + Measure)
Off, Preselector Off
Average (Average /Lim. Average) (Wire + Measure)
x AV-Value [dBuV] (FinalAvg) (Wire + Measure)



FinalAvg (1)

Frequency (MHz)	SR	AV-Value [dBμV]	AV-Limit [dBμV]	Margin [dB]	Comments	Correction (dB)
100	1	17.44	20.00	2.56	Pass	-9.89

4.1 Photo documentation of the EUT



Figure 1: EUT

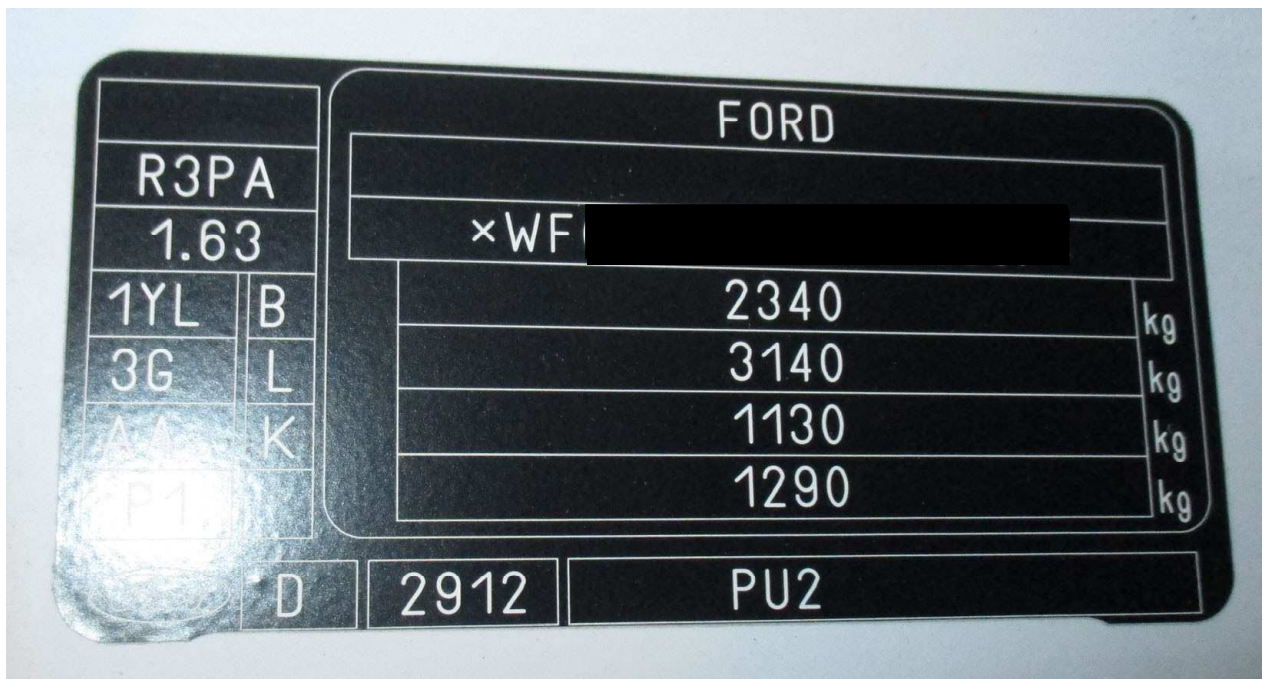


Figure 2: Type label